

31st January 2025

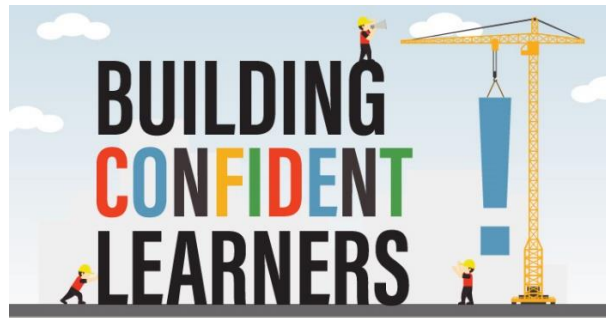


THE PINEHURST PRESS

Experience ~ Excel ~ Enjoy

A weekly newsletter to share the news of Pinehurst Primary School

Teaching and  Learning



At Pinehurst we Experience, Excel, and Enjoy

Building Confidence, Resilience, and Determination

At Pinehurst Primary School, we believe that nurturing confidence, resilience, and determination is key to unlocking every child's potential. These essential skills not only enhance academic achievement but also prepare children for life's challenges beyond the classroom.

Confidence

We encourage our students to believe in themselves and their abilities. Through engaging lessons, supportive relationships, and opportunities to celebrate success, children develop a strong sense of self-worth and the courage to take on new challenges.

Resilience

Mistakes are part of learning, and at Pinehurst, we foster a growth mindset where children view setbacks as opportunities to grow. By building resilience, we empower our students to persevere and thrive, even when faced with difficulties.

Determination

We inspire children to set goals and strive for excellence. Whether through academic endeavors, sports, or creative pursuits, our students learn the value of hard work and the satisfaction of achieving their aspirations.

By focusing on these qualities, we are improving outcomes for children in every aspect of their education. At Pinehurst, we create a safe, encouraging environment where every child can experience, excel, and enjoy their journey to success.

Don't forget to log
in to TT Rockstars
and Numbots every
week

School Contact
Number

07858 739336 for
Emergencies

STAYING SAFE ONLINE

"Thinkuknow" websites for advice about staying safe when you are on a phone, tablet or computer, use this link to access the site.

<https://www.thinkuknow.co.uk/>

Use this link to go direct to the parents/ carers part of the website

<https://www.thinkuknow.co.uk/parents/>

quote of the week

“
You can teach a student
a lesson for a day;
but if you can teach him
to learn by creating
curiosity, he will continue
the learning process as
long as he lives.

Clay P. Bedford



Weekly Attendance and Minutes Late

Year Group	Class	Attendance %	Minutes Late
R	Ash	88.2% 😞	122
R	Oak	94.9%	114
1	Elm	95.6%	138
1	Cherry	96.6%	187
2	Fir	98.2% 😊	109
2	Yew	93.7%	41 😊
3	Cedar	95.2%	75
3	Hazel	93.3%	179
4	Chestnut	93.3%	63
4	Holly	92.5%	244 😞
5	Maple	90.3%	125
5	Sycamore	94.6%	160
6	Birch	97.8%	92
6	Willow	97.1%	72

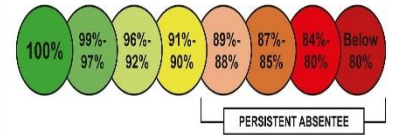


Whole School attendance –

94.4%

ATTENDANCE MATTERS

On Time: First Time, Every Time



Which CIRCLE are you in?



More information on how we will be celebrating in the coming weeks...



Bug Busting

Please remember to check your child's hair regularly for head lice and treat them immediately should they be found. Thank you for your cooperation.



Our newest additions to the Pinehurst Family have arrived. Congratulations to Miss Fry and Miss McBride.



Reminder that children should be wearing PINEHURST PE KIT on one day per week. This is the school PE kit of a yellow t-shirt and navy shorts or joggers with a school jumper or cardigan please. NO OTHER SPORTS WEAR OR KITS. Thank you for your cooperation.

Coffee Morning



Family Well Being Morning

9.15-11.15

Wednesday 12th February



We break up for half term next week on FRIDAY 14TH FEBRUARY