



## What is the Sports Premium?

The Department for Education has confirmed today that the Primary PE and sport premium funding will continue for academic year 2024-24.

The funding is a ring-fenced grant for English primary schools to provide additional and sustainable improvements to the quality of PE, sport and physical activity. Allocations to schools are determined by a formula based on pupil numbers. £320 million will be delivered to schools in 2024-25 to give more children access to high quality PE lessons and sporting opportunities, supporting both their physical and mental wellbeing.

In addition, £22 million (over 2 years) will also support the continuation of the School Games programme to give particularly passionate and talented young people the opportunity to participate in competitive sport.

The PE and sport premium and School Games programme support the government's commitment to ensuring children and young people have access to at least 60 minutes, or 20 minutes for children with a disability, of physical activity a day. Building on this commitment, £10 million is supporting schools to open up sport and swimming facilities. The Department for Education has already provided funding from phase one and two of this initiative to schools and is currently procuring a national delivery partner to allocate further funding and advice to schools over the next phase of the programme.

The Sports Premium funding in 2024-25 continues and it is anticipated we will receive **£19,940** at Pinehurst Primary School. There is no underspend to carry forward from the previous year.

**The sport funding can only be spent on sport and PE provision.**

## Department for Education's Purpose of funding:

Schools will have to spend the sport funding on improving their provision of PE and sport, but they will have the freedom to choose how they do this.

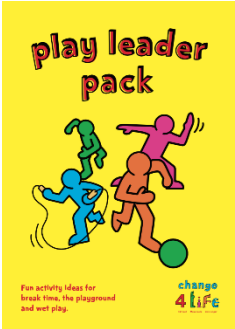
Possible uses for the funding include:



- hiring specialist PE teachers or qualified sports coaches to work alongside primary teachers when teaching PE
- new or additional sport clubs
- paying for professional development opportunities in PE/sport
- providing cover to release primary teachers for professional development in PE/sport
- running sport competitions, or increasing participation in the school games

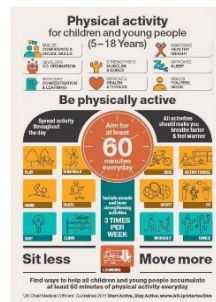
- buying quality assured professional development modules or materials for PE/sport
- providing places for pupils on after school sport clubs and holiday clubs.
- Membership to the Liverpool Sports School Partnership (LSSP) – giving us access to range of CPD, enabling children to participate in a range of sporting competitions and events

**How Pinehurst Primary School will be spending the Sports Funding 2024-25 and who will benefit:**

The Governors agree that the money must be used so that: **all children benefit** regardless of sporting ability; that the most able children are given the opportunity to compete in advanced tournaments; that staff have access to training opportunities and continued professional development; swimming and school visits are subsidised in order to support all families financially.

Pinehurst Primary School 2024-25					
Initiative	Intended outcomes	Actions and responsible person	Breakdown of spend	Impact and sustainable improvements	Evaluation To be completed June 2024
Objective 1 Engagement of all pupils in regular physical activity.					
	<p>Designated LSSP coach to train Play Leaders for play &amp; lunch times. K Farrell to supervise lunch time activities and encourage pupils to participate – focus on least active.</p> <p>Purchasing of further new equipment for playtimes for use by Play Leaders.</p>	<p>K Farrell L Wright Staff on playground duties</p>	<p>LSSP Coaching support at lunchtimes £250.00 per half term = £1500.00 Resources for playtimes</p>	<p>Children are active and energised and benefit from better health. Children are engaged in physical activity that promotes their health and well being at playtimes.</p> <p>Evidence: Playtime observations / Pupil voice surveys</p>	

	<p>The school has hired the services of Sports Coaches from LSSP and LFC Foundation to deliver PE lessons alongside our staff, CPD sessions, after school clubs, competitions, website and expand children's sport diet. Targeted groups invited to specific clubs including PP, Less Active, SEMH target children.</p>	<p>K Farrell L Wright LFC Foundation A Wright All Teachers</p>	<p>LSSP 1 day per week See below</p>	<p>All children participate in sessions that support their skills, activity and appreciation of the importance of a healthy lifestyle.</p> <p>Evidence: Club registers / Evaluations / Twitter and Website</p>	
	<p>Playground equipment maintained and used to promote physical activity during playtime, lunchtime, before/after school clubs ,PE lessons and other cross curricular work.</p> <p>Use of Active Schools planner to develop active learning across the curriculum.</p> <p>Improvements link to CMO guidance.</p>	<p>K Farrell R Ortiz</p>	<p>£500.00 Repairs</p>	<p>All children engage in physical activity throughout the day and are encouraged to take part in regular exercise and promote a healthy lifestyle.</p> <p>Evidence: Playground equipment and resources / Observations: Playtimes, Sports clubs, PE sessions / Active schools planner and curriculum plans</p>	



**Objective 2**

The profile of PE and Sport is raised across the school as a tool for whole school improvement.



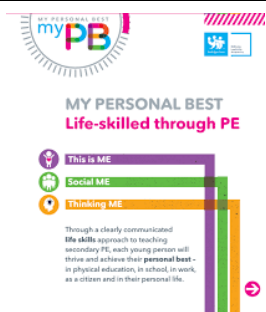
Children who have participated in competitions write and present a sporting event report to promote participation. Matches coordinated through Liverpool School Sports partnership and local cluster links. Match reports to be uploaded to school website.

K Farrell  
Teaching Staff

£200.00  
Staffing and transport for matches

Links to literacy- especially impact for reluctant boys  
Readers/writers

Evidence:  
Match reports and photographs /  
Newsletters / Website




Children have access to Golden Threads to support their life skills, characteristics and behaviour which ultimately results in greater engagement and understanding of the importance of PE.

K Farrell  
Teaching Staff  
LSSP Coach


LSSP Enhanced Membership See below



Links to whole child and SMSC development



Evidence: Lesson plans / Pupil Interviews


	<p>Children and families to have the opportunity to engage in activities to promote health and well being in their daily lives and create habits for positive futures,</p>	<p>K Farrell M Wright EiTC LSSP Positive Futures</p>	<p>Health and Wellbeing Week enrichment £1150.00</p>	<p>Links to whole child and SMSC development Links to wider community and future change</p> <p>Evidence: X / Newsletter / Pupil voice</p>	
---	--	--	--	---	--

**Objective 3**  
Increased confidence, knowledge and skills of all staff in teaching PE and Sport.



	<p>Sports Coach sessions arranged to work alongside new / less confident class teachers to ensure high quality PE lessons are delivered.</p> <p>Staff will be developed through sharing good practice and assisting in the PE lessons.</p> <p>The teachers observe the best practice of the specialist and improve their own practice for further lessons.</p>	<p>K Farrell L Wright A Wright</p>	<p>LSSP coach See below Additional sports coach sessions to support staff CPD</p>	<p>Target staff identified, they and new staff feel more confident delivering high quality PE, impact is seen in the quality of teaching and learning and outcomes.</p> <p>Evidence: Lesson Observations / Staff interviews / Lesson planning</p>	
---	--	--	---	---	--


	<p>Membership of LSSP</p> <p>Release time / supply cover for staff and PE Lead to attend training and cluster meetings through Sports Partnership, 3 per year.</p>	<p>K Glynn Headteacher</p>	<p>Total LSSP costs:          £4299.00 Enhanced          £6049.00 Coaching          £672.00 Balanceability</p> <p>£150.00 Cover costs</p>	<p>School is kept informed of latest developments in PE and school sports.</p> <p>Staff can access available training to further improve the quality of teaching and learning.</p> <p>Evidence:          CPD impact / Subject leader action plans and reports to Governors</p>	
	<p>Membership of Link Learning Network. Subject specific training and learning networks with other schools.</p>	<p>K Glynn Headteacher / K Farrell</p>	<p>£200.00 Cover costs</p>	<p>Staff can access available training to further improve the quality of teaching and learning.</p> <p>Opportunities to share and develop practice through working with a range of other settings with differing experience and expertise.</p> <p>Evidence:          CPD impact / Subject leader action plans and reports to Governors</p>	

<p>Objective 4          Broader experience of a range of sports and activities offered to all pupils.</p>					
	<p>Additional specialist Sports Coaches brought in and external visits to offer children a wider range of sports including Olympic sports to encourage the next generation. Activities in response to pupil interests and School Council / Pupil Voice.</p>	<p>K Farrell          LSSP Coach</p>	<p>LSSP See above</p>	<p>Children to widen and deepen their knowledge, skill and technique in varying sports</p> <p>Evidence:          Lesson plans / Twitter / LSSP evaluation</p>	
	<p>Pinehurst also offers a range of after school clubs, accessed by children from Key Stages 1 and 2. These clubs will continue to run without any of the charges that we pay coaches / staff who deliver these clubs being passed onto the parents. Currently the clubs on offer are:</p> <p>Lunch Clubs: see separate sheet</p>	<p>K Farrell</p>	<p>£300.00          Staff costs</p>	<p>Children engage in range of sports and extra-curricular learning that increases their experience and promotes their health and well-being.</p> <p>Evidence:          Registers / Website and Twitter / Evaluations</p>	

	After School Clubs: See website				
	<p>Swimming is part of the National Curriculum, before children leave our school it is expected that they are able to meet the objectives highlighted below. At Pinehurst Primary School, UKS2 children go swimming (Y5&amp;6) with 3 weeks of extra sessions in the Summer Term for Y6 pupils – these ‘Top Up’ sessions allow those who haven’t managed to achieve their 25 m and safety skills, to do so before leaving Primary School. These Top Up sessions are subsidised by the sports funding the school receives.</p>	<p>K Farrell KS2 Class teachers Swimming Instructors</p>	<p>£750.00 Swimming Instructors</p> <p>£85.00 Online assessment tool</p>	<p>Children will be competent swimmers. They will be able to pace themselves in floating and swimming challenges related to speed, distance and personal survival. They will swim unaided for a sustained period of time over a distance of at least 25m. They will be able to use recognised arm and leg actions, lying on their front and back. Use a range of recognised strokes and personal survival skills [for example, front crawl, back crawl, breaststroke, sculling, floating and surface diving]</p> <p>Evidence: Swimming outcomes</p>	



	<p>Participation in residential and school visits. Opportunities to apply skills taught to a real life context e.g. climbing, abseiling and orienteering.</p>	<p>K Glynn Headteacher / K Farrell</p>	<p>£2135.00 CHET          £1250.00 Transport          £750 Individual non payment due to affordability          Subsidise visits          CHET - January 2025</p>	<p>Children will experience applying the skills taught in a real life and meaningful context of learning.          Evidence: Evolve</p>	
<p>Objective 5          Increased participation in competitive sport.</p>					
	<p>Schools Sports Package - Active Membership within Liverpool School Sports Partnership.</p>	<p>K Farrell          LSSP Link</p>	<p>£200.00          Additional funding to ensure full participation in Sports Partnership events Including transport</p>	<p>School participation is increased in events such as:          Swimming gala/water polo          Girls football          Boys football          and others.          Evidence:          LSSP report / Twitter / Newsletters</p>	

	<p>Local Cluster meetings attended to plan and organise dates for fixtures and ensure participation</p>	<p>K Farrell</p>	<p>£150.00 Staff to attend meetings and matches</p>	<p>Facilitating local fixtures for a range of competitive sports to enable the children to have the opportunity to compete</p> <p>Evidence: Meeting minutes</p>	
---	---	------------------	---	---	--

**Total anticipated costs: £20,340.00**

**Overspend £400.00**